



14 Bryan Gardens, Binfield, Bracknell, RG42 4JQ
Offers over £675,000

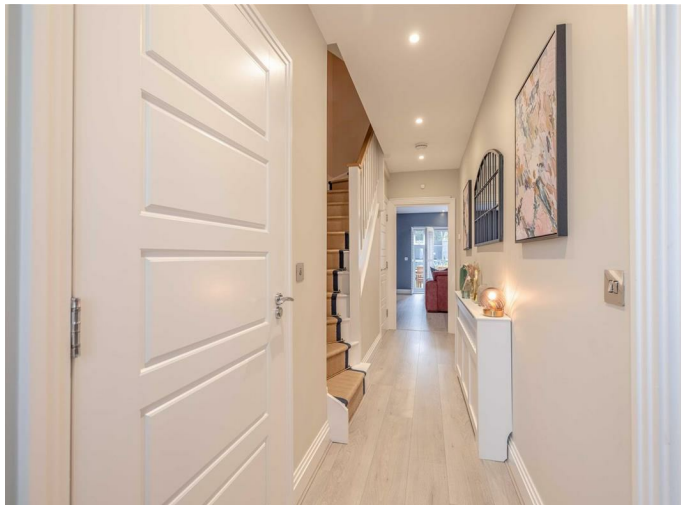
14 Bryan Gardens, Binfield, Bracknell, RG42 4JQ

FOUR BEDROOM FAMILY HOME Located towards the end of a cul-de-sac, tucked away conveniently is this four bedroom end of terrace family home with parking.

To the ground floor is an entrance hallway, a fully integrated tiled kitchen with Siemens appliances and the use of a water softener installed. Furthermore a downstairs washroom, a large & spacious living room with a bespoke Sharps media unit, panelling and additional lighting, as well as French Patio doors to providing access to the rear.

The first floor consists of a master double bedroom with an en-suite with a shower-piece suite, second double bedroom, third bedroom and family bathroom with a bath-piece suite. On the second floor is an impressive private master bedroom, dressing area and en-suite bathroom with a shower-piece suite.

Externally the property benefits from being in a private secluded part of The Croft Development, a rear garden with high-standard artificial grass, car port for two tandem style parking spaces, a separate allocated parking space close to the property and finally an EV car charging port. Additionally the property has been fitted with Shutters by Hilary Blinds, still benefits from NHBC warranty, has easy access to the M4 corridor and is close to local amenities.







Total Approximate Floor Area
1593 Square feet
148 Square metres



**Illustrations are for identification purposes only,
measurements are approximate, not to scale.**